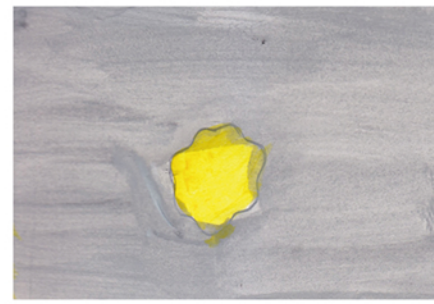




1. Animated sting starts with a yellow screen



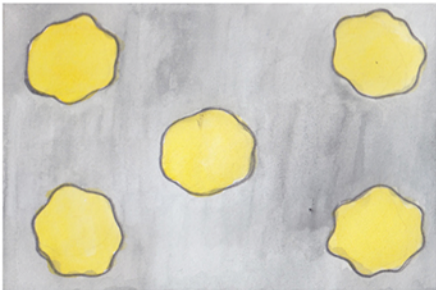
2. Yellow colour turns into a shape and begins to move away from the screen



3. It continues to move away from the screen and move on its own



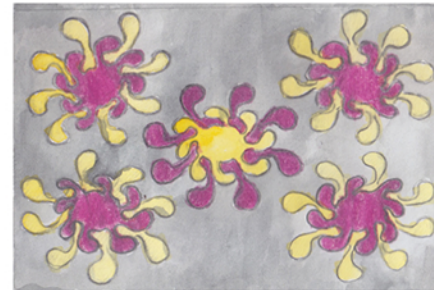
4. A shape begins to split into different parts



5. And it splits into five parts



6. Then they turn into five spinning shapes and the one in the middle changes its colour



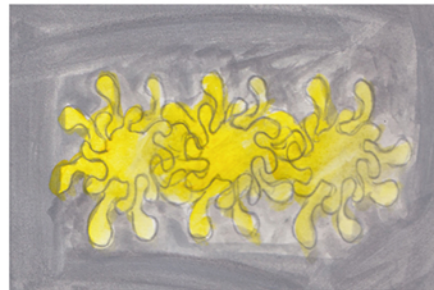
7. Spinning shapes grow larger and all of them change their colours



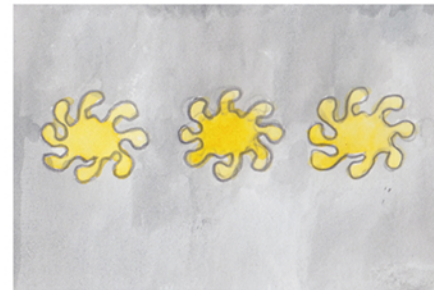
8. They come close together



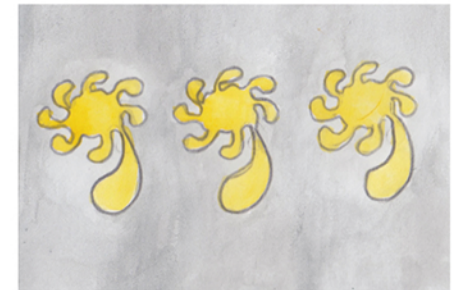
9. Five shapes join together and make one large spinning shape



10. Two-coloured shape becomes yellow and begins to split into three smaller parts



11. They keep spinning and growing smaller



12. Shapes continue to spin and begin to change their form



13. Three elbow shapes keep spinning



14. Three shapes stop spinning and change their form again



15. They grow larger and darker. come towards the screen



16. Shapes turn into nines revealing company's logo and URL